

ARG | m

ARGENTEO MINING S.A.



FLUID MANAGEMENT AND MATERIALS HANDLING

OFFICIAL DISTRIBUTORS OF LEADING BRANDS

ARGENTEO MINING

We are experts in fluid management and materials handling solutions.

Argenteo Mining S.A. We are experts in providing all types of solutions and services for fluid management and materials handling, with nearly 20 years of experience in the market. We have a broad presence in the mining industry, oil & gas, infrastructure, water, and general industry.

Our headquarters and main plant are located in the Las Heras Industrial Park, Mendoza, and we operate four regional business units: **North, South, Central-West, and Central-East** throughout the national territory, along with a network of repair and diagnostic workshops. Furthermore, we hold exclusive distribution rights for world-renowned leading brands. In specific cases, we offer local manufacturing of wet end parts for certain pump sizes. We also operate another assembly and maintenance plant in **Perito Moreno, Santa Cruz**.

MISSION | To provide innovative and efficient technical solutions that contribute to the sustainable development of the mining industry, ensuring the highest standards of quality and safety in every project.

VISION | To be the leading strategic partner in the region for mining supplies and services, recognized for our excellence, reliability, and commitment to technological innovation.

VALUES | Commitment. Responsibility. Transparency.



OUR BRANDS

ARG | M



grindex



SCHURCO

DRAGFLOW



LOWARA

HIGRA
Mining

godwin



GOULDS
WATER TECHNOLOGY

AC
FIRE PUMP

Atlas Copco



ENDURANCE
BELTING

FLEXCO



SHURJOINT

OUR BRANDS

FLUID MANAGEMENT

We are the exclusive distributors in Argentina for all **Grindex** brand series.

We distribute the **Flygt 3000 series** for water and sanitation, **Lowara** deep well pumps, **Godwin** motor pumps (diesel or hydraulic), **Dragflow** dredging pumps for fluid drainage, **Higra** high-flow and high-head pumps, **Schurco Slurry** pumps, and **HDPE** piping.

MATERIALS HANDLING | ENDURANCE

Heavy-duty and light-duty belts with cold and hot vulcanizing services, as well as mechanical splicing (using fasteners).

MECHANICAL JOINING AND FASTENING | FLEXCO

Accessories for conveyor belts.

SHURJOINT GROOVED PIPING SYSTEM

Joints, couplings, mechanical fittings, and valves for metallic and plastic piping.

POWER GENERATION SYSTEMS | ATLAS COPCO

Portable Diesel generators from 60 KVA to 2500 KVA. Rental service.

OUR SERVICES

We have a specialized team with more than 30 years of experience focused on component integration and comprehensive solutions.

- Equipment rental.
- In-company training.
- Pump maintenance and repair.
- Pump testing and diagnostic laboratory.
- Belt vulcanizing and mechanical splicing.
- Pump calculation and selection.
- Development of specific solutions.
- Consultancy: Fluid management, power generation, and belt conveying.
- Surveys and engineering.
- Comprehensive supply.



SUBMERSIBLE ELECTRIC PUMPS



DRAINAGE PUMPS – M SERIES

Suitable for mining, construction, tunneling, and other high-demand industrial applications. Manufactured with a robust aluminum and cast iron casing, with wear-exposed components lined with elastomer or polyurethane.

These pumps are designed to:

- Pump water containing solids up to the size of the strainer openings.
- Pump water with abrasive solids.
- Pump groundwater.
- Pump raw water.
- Pump wastewater.

TECHNICAL FEATURES

- Max. head: **200 m**
- Max. flow rate: **1,260 m³/h**
- pH range: **5 – 8** (Mega version: **6 – 13**)
- Power range: **0.6 kW – 95 kW**
- Max. fluid density: **1.1 kg/dm³**
- Hard Iron impeller



SLURRY PUMPS – S SERIES

Suitable for mining, construction, tunneling, quarries, and other high-demand industrial applications. Manufactured with a robust aluminum casing, with wear-exposed components lined with polyurethane.

These pumps are designed to:

- Pump water with a high solids content, up to a particle size of 80 mm.
- Pump water containing abrasive particles.
- Pump different types of slurry and mud.

TECHNICAL FEATURES

- Max. head: **40 m**
- Max. flow rate: **81 m³/h**
- PH range: **5 - 8**
- Power range: **1,2 kW - 6,7 kW**
- Max. fluid density: **1,1 Kg/dm³**

SUBMERSIBLE ELECTRIC PUMPS



SLURRY PUMPS – B SERIES

Suitable for mining, quarries, dredging operations, sedimentation pond cleaning, and other industries requiring pumps with high durability. Manufactured with a robust Hard Iron casing for extended service life under severe operating conditions.

These pumps are designed to:

- Pump water containing solids up to the size of the strainer openings.
- Pump water with abrasive solids.
- Pump groundwater.
- Pump wastewater.
- Pump raw water.

TECHNICAL FEATURES

- Max. head: **50 m**
- Max. flow rate: **480 m³/h**
- PH range: **5,5 - 14**
- Power range: **5,7 kW - 75 kW**
- Max. fluid density: **1,7 Kg/dm³**



STAINLESS STEEL DRAINAGE PUMPS

Suitable for mining, construction, landfills, and other applications involving corrosive fluids. Manufactured in AISI 316 stainless steel, providing excellent corrosion resistance.

These pumps are designed to:

- Pump fluids with a high solids content, up to 50 mm particle diameter.

TECHNICAL FEATURES

- Max. head: **200 m**
- Max. flow rate: **510 m³/h**
- PH range: **2 - 10**
- Power range: **2,6 kW - 90 kW**
- Max. fluid density: **1,1 Kg/dm³**

PROCESS PUMPS

ARG | m



ARG | M PROCESS PUMPS

A widerangeofcentrifugal process pumps available in multiple configurations, materials, and compliance standards. Supplied as compact units or bare-shaft pumps, with the corresponding couplings and baseplates for a variety of industrial applications. Pump components have been designed to be interchangeable across models, ensuring flexibility and ease of maintenance.

Technical support and application engineering are available for handling complex fluids in Mining, Oil & Gas, Chemical, Effluent, and General Industrial applications.

STANDARDS

Non-standard models - **ASME/ANSI B73.1M** - **ISO 2858** - **EN 733** / **DIN24255**.

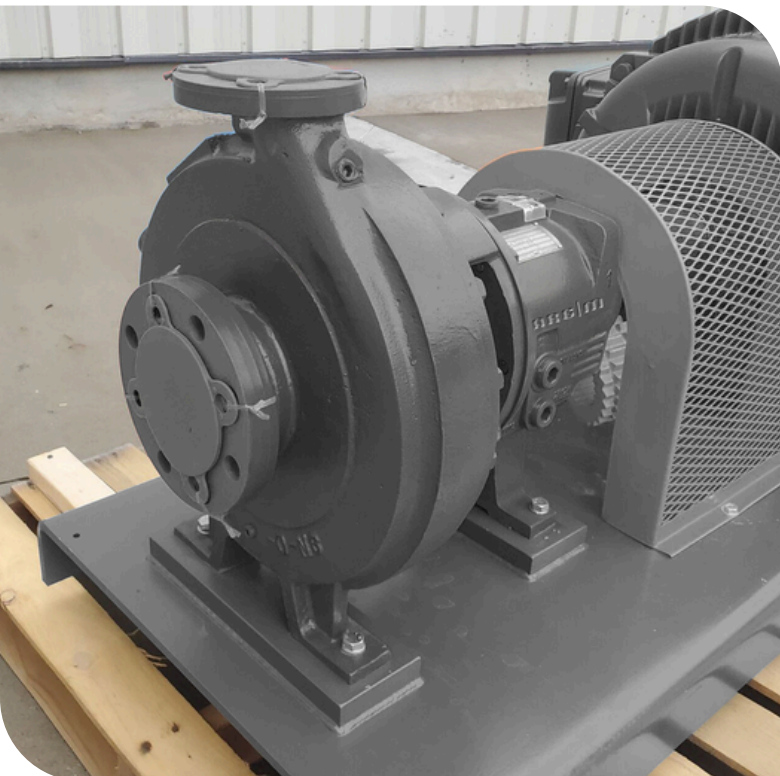
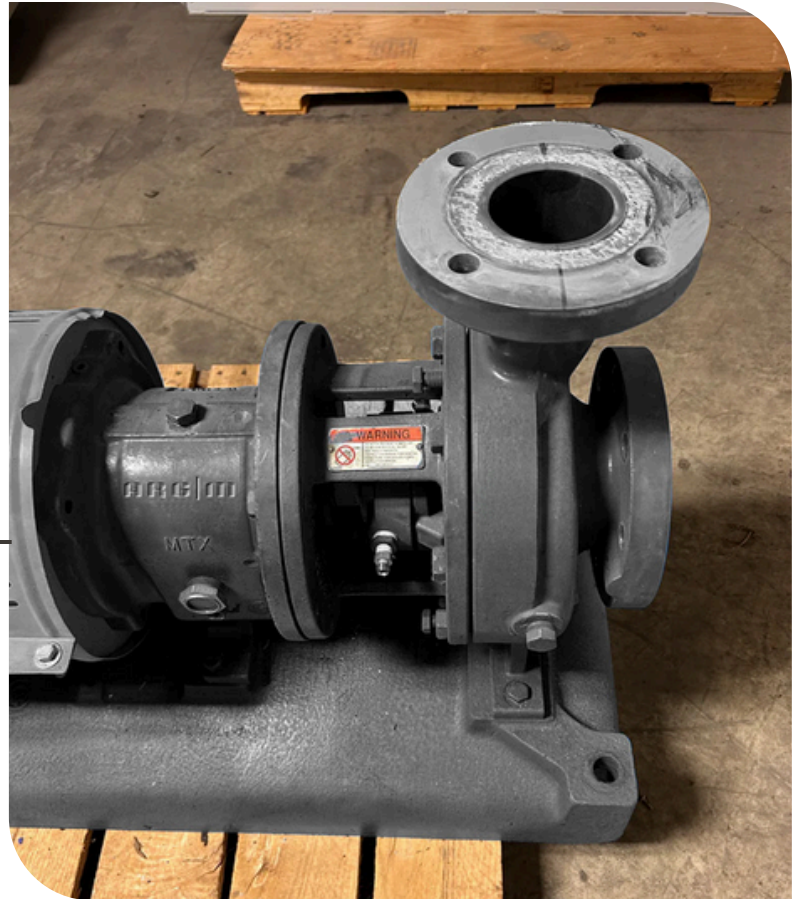
TECHNICAL FEATURES

Wide operating range

Flow rates from very low capacities up to **1600m³/h**

Heads up to **265 m.c.a.** in single-stage configuration

Operating temperature range from **-20°C hasta 370°C**



PROCESS PUMPS

ARG | m

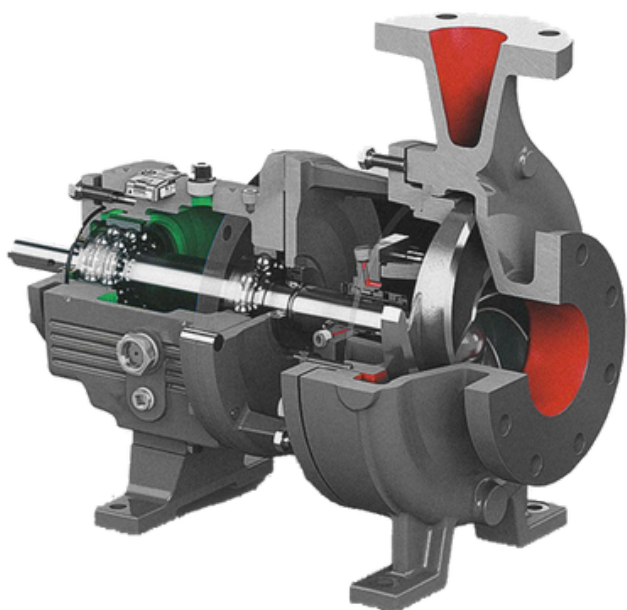


MATERIALS

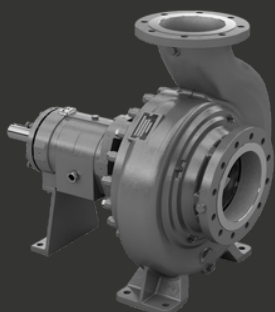
Ductileiron, AISI 316 stainless steel, CD4, A20, Hastelloy B and C, Titanium, etc.
Wide range of power ratings and insulation classes available for electric motors and drive systems.

DESIGN TYPES

- Horizontal centrifugal pumps
- Vertical sump pumps
- Horizontal and vertical multistage pumps
- Vertical in-line pumps
- Self-priming pumps



OUR MODELS



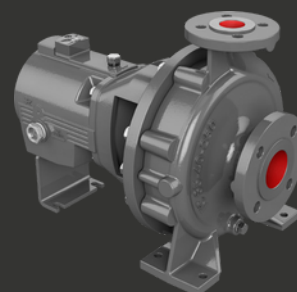
3180 MODEL



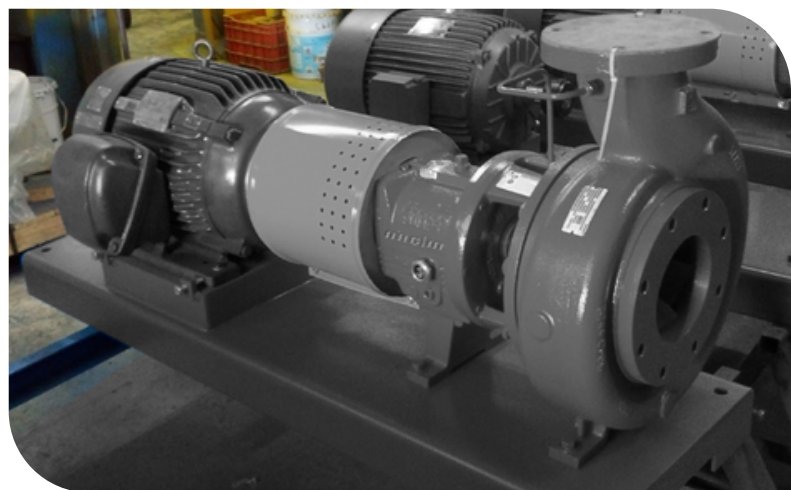
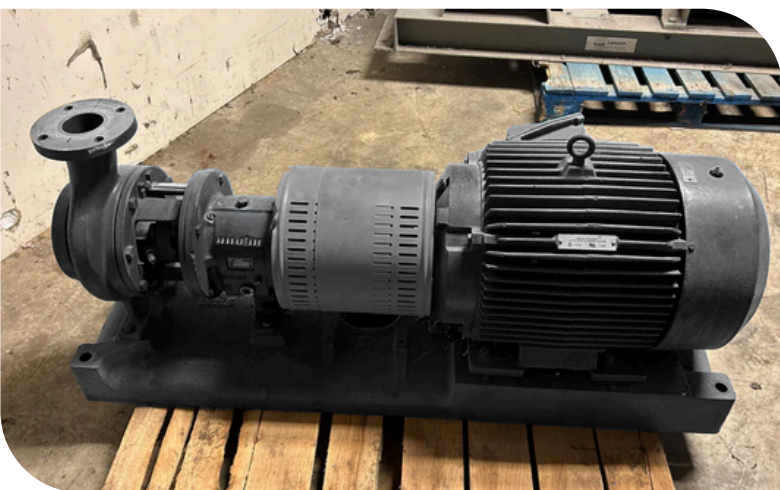
3196 MODEL



LF 3196



ICO MODEL



MOTOR-DRIVEN PUMPS

godwin 



MOBILE PUMPING STATIONS

Godwin self-priming horizontal shaft pumps are driven by powerful electric or diesel engines. They provide reliable solutions for handling heavy fluids and are supplied mounted on skid bases or trailers.

Key advantages include:

- Easy transportation, robustness, and simple operation.
- Capability to handle suspended solids up to **125 mm diameter**
- High reliability equipment.

TECHNICAL FEATURES

- Max. head: **193 m**
- Max. flow rate: **3,500 m³/h**

PUMPS

 **LOWARA**



LOWARA PUMPS

These single-stage and multistage centrifugal pumps are designed for handling clean fluids without suspended solids. They are ideal for industrial applications, power generation, sugar mills, and pulp and paper plants.

Key advantages include:

- Impeller and bearing frame disassembly without removing the pump casing or motor.
- Back pull-out design.
- Easy maintenance.

TECHNICAL FEATURES

- Max. head: **170 m**
- Max. flow rate: **4600 m³/h**



ELÉCTRICAS



HIDRÁULICAS

ELECTRIC AND HYDRAULIC DREDGE PUMPS

All pumps in this series are equipped with a high-efficiency standard agitator designed to resuspend settled solids.

Key advantages include:

- Pumping of non-Newtonian fluids.
- Easy installation on hydraulic excavator booms.
- High abrasion resistance with high-chrome wear parts.
- Capability to handle up to 70% solids concentration.

Ability to pump solids up to 120 mm.
CE/UL /CSA certification.

ELECTRIC VERSION – TECHNICAL FEATURES:

- Max. head: **72 m**
- Max. flow rate: **900 m³/h**

HYDRAULIC VERSION – TECHNICAL FEATURES:

- Max. head: **65 m**
- Max. flow rate: **1350 m³/h**

HYDRAULIC CUTTERS AND JET RING

Hydraulic cutters for dredge pumps can be mounted directly onto the pump, creating a self-contained and autonomous system, highly efficient in hard and compact soils where a backhoe would otherwise be required. When mounted on the pump, they also increase the average solids production rate of the dredging system.

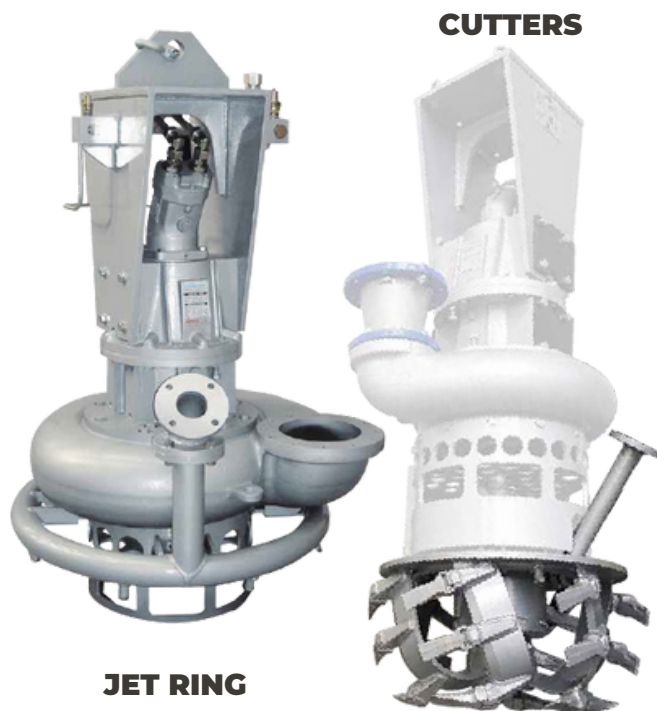
Available configurations: **Axial and lateral versions. Hydraulic and electric drive options.**

Key advantages include:

- Cutting head design that minimizes wear parts cost.
- Heavy-duty motors ensuring high torque and long service life.

Interchangeable high-hardness teeth.

JET RING is a high-pressure water jet ring system. It can be used in the presence of compact materials, very dry materials, or clay-rich soils. Designed for use with electric or hydraulic dredge pumps, it breaks and disintegrates material using the force of pressurized water.



JET RING

CUTTERS



VERTICAL SLURRY PUMPS

These pumps are available with hard iron or elastomer-lined wet ends, allowing reliable operation under a wide range of conditions, including sump applications, septic pits, or floating drainage platforms. Typical applications include mining, chemical processing, effluent treatment, gravel and sand handling.

Key advantages include:

- These slurry pumps do not require shaft sealing, eliminating issues related to "flooded bearings" caused by slurry ingress.

TECHNICAL FEATURES

- Max. head: **50 m**
- Max. flow rate: **6.800 m³/h**



HORIZONTAL SLURRY PUMPS

Specifically designed to withstand the most severe operating conditions, these pumps provide the most reliable and efficient solution. They feature long-life impellers and advanced sealing solutions, with wet-end components manufactured in hard iron or elastomer. Applications include mining, chemical processing, effluent handling, gravel and sand pumping, and abrasive fluid transfer.

Key advantages include:

- Lower operating costs and reduced downtime.
- Interchangeable parts with other major brands.
- More reliable service intervals.
- Extended service life and higher efficiency.

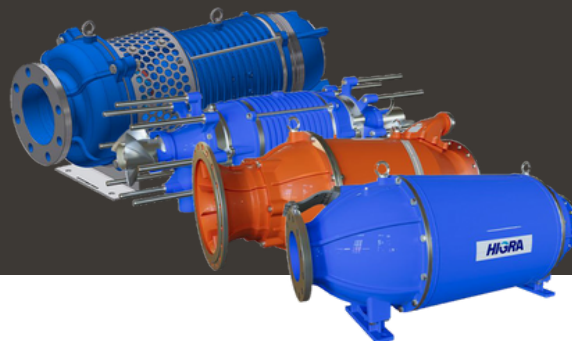
TECHNICAL FEATURES

- Max. head: **100 m**
- Max. flow rate: **7,300 m³/h**
- Wide range of flow rates and pressure capabilities



AMPHIBIOUS PUMPS

HIGRA



AMPHIBIOUS PUMPS

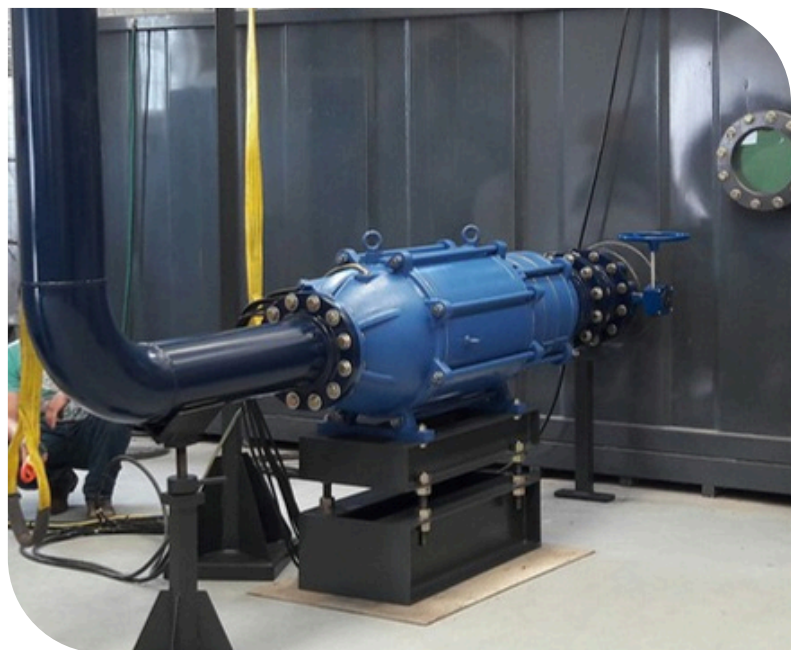
HIGRA amphibious pumps are designed to operate both submerged and dry-installed. They feature a unique hydraulic geometry, where the fluid enters through a flanged axial suction and flows past a centrifugal impeller along the motor. This design ensures: efficient heat exchange, low noise levels, installation versatility, low maintenance requirements and high hydro-energetic efficiency. These pumps are widely used in mining, water management, industrial, and agricultural applications.

These pumps can be applied in:

- Water Supply: Raw and clean water intake for municipal supply. Pumping stations.
- Pressurization of water distribution lines.
- Irrigation Systems: Drip irrigation systems. Sprinkler irrigation.
- Drainage Systems: Urban drainage. Underground mining drainage.
- Open-pit mining.
- Process Tanks and Reservoirs: Handling fluids with suspended solids.
- Water Circulation: Cooling towers.
- Wastewater and reclaimed water systems.
- Filter backwashing in compact pumping stations.

INSTALLATION TYPES

- Fully submerged
- Partially submerged
- Modular configuration
- Suction installation
- Booster / in-line installation
- Floating barge installation



TECHNICAL FEATURES

R SERIES – RADIAL FLOW

- Max. head: **295 m**
- Max. flow rate: **2600 m³/h**
- Power range: **15 - 600 Hp**



M SERIES – MIXED FLOW

- Max. head: **50 M**
- Max. flow rate: **2500 M³/h**
- Power range: **12 - 600 HP**

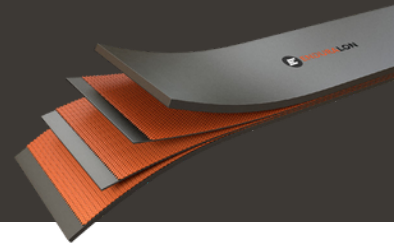


A SERIES - AXIAL FLOW

- Max. head: **18 M**
- Max. flow rate: **6000 M³/h**
- Power range: **75 - 300 HP**



CONVEYOR BELTS AND ACCESSORIES

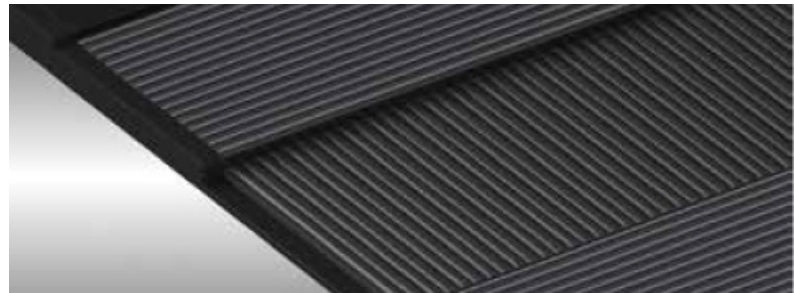
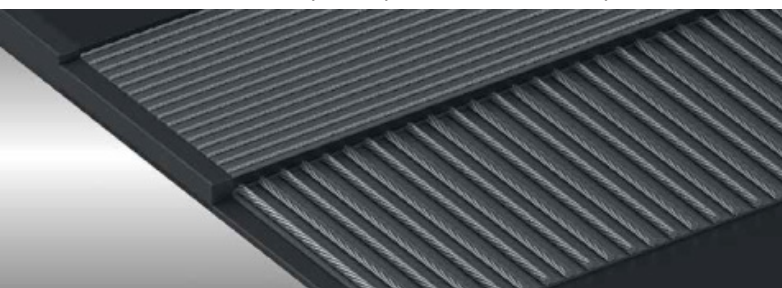


STEEL CORD CONVEYOR BELTS

Ideal for the handling of the heaviest materials and highest tensile applications. **Key advantages** of these belts include excellent transverse wear resistance, long-lasting splices, high flexibility, tensile strength ratings up to ST 10000, and belt widths of up to 3,000 mm.

TYPES

- Endurasteel
- Endurasteel plus (elastic breaker)



STEEL CARCASS CONVEYOR BELTS

Ideal for special high-tension material handling applications. They represent an enhanced alternative to textile belts.

Key advantages include improved belt troughability, higher resistance to tearing, and superior load support compared to textile belts.

TYPES

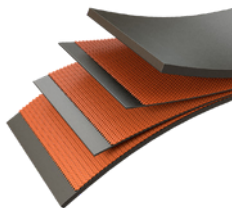
- Enduratrans (single elastic breaker)
- Enduracord (double elastic breakers)

TEXTILE CONVEYOR BELTS

These belts are manufactured using polyester-nylon (EP) fabrics. **Their main advantages** include maximum widths of up to 6,600 mm, low elongation, excellent flexibility, easy splicing, and high resistance to tearing.

TYPES

- Enduraply (heavy material handling)
- Enduralon (secondary applications)
- Enduraspar (light-duty applications)



CONVEYOR BELT ACCESSORIES

Solutions designed to ensure the proper operation of conveyor belt systems. These products help improve system care, correct potential issues, and maximize belt performance.

- Drive and tail pulleys.
- Carrying and return rollers.
- Mechanical belt splicing systems.
- Belt maintenance tools.
- Conveyor belt cleaning systems.
- Belt tracking and alignment systems.
- Skirting systems and impact beds.



ELECTRICAL GENERATORS

Atlas Copco



POWER GENERATION SYSTEMS

These generators provide all the robustness, durability, and reliability required for power generation applications. They feature a Plug-and-Play design, including multiple power outlets, locking systems, and terminal boards, along with quick and easy connections for fuel and urea. They are equipped with fuel valves, automatic refueling systems, automatic transfer systems (ATS), Fleetlink telemetry, and simple parallel operation capability.

- Diesel internal combustion engines.
- High efficiency and reliability.
- Plug-and-Play design.
- Safety systems and performance monitoring.

Services

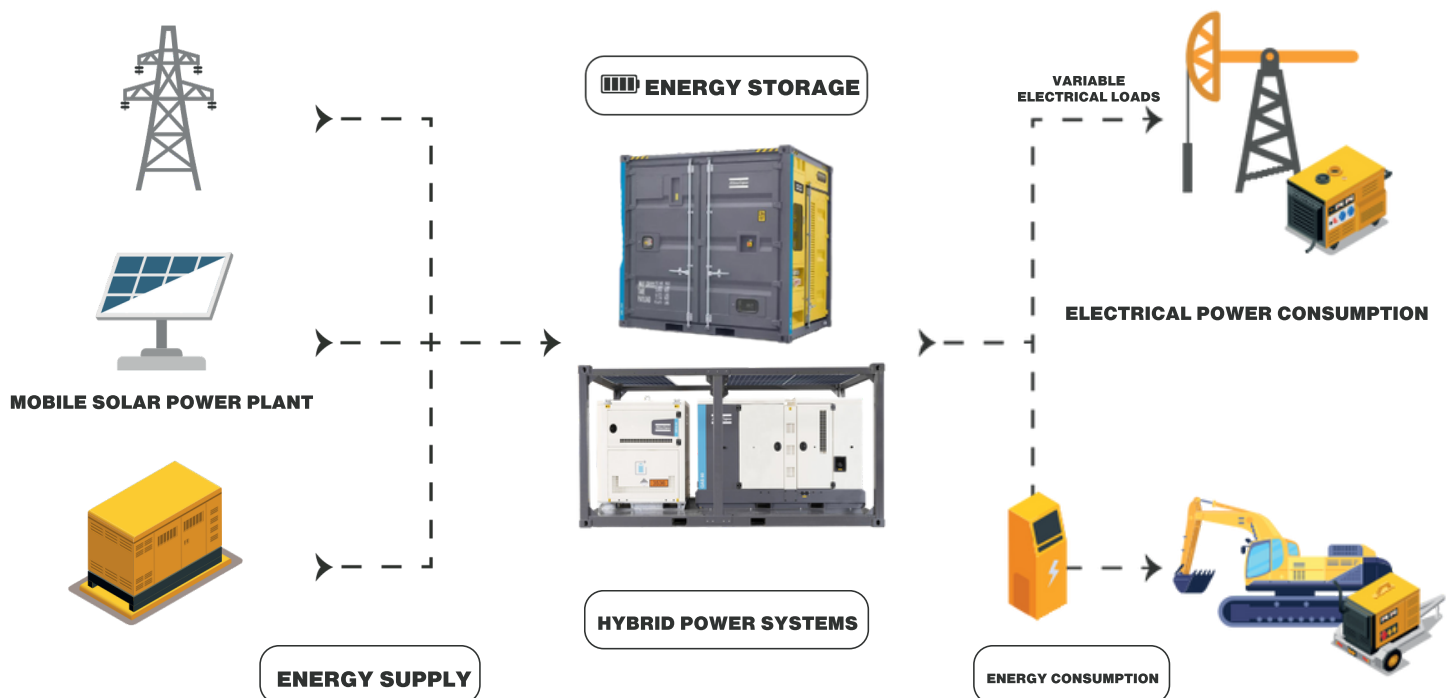
- Generator sales and rental services.
- Technical support and remote monitoring
- Easy transportation and installation.
- Modular scalability.

TECHNICAL FEATURES

- **50 / 60Hz.**
- Voltage **400 / 480 V.**
- Power range: from **60 KVA** to over **2500 KVA.**



GENERADORES

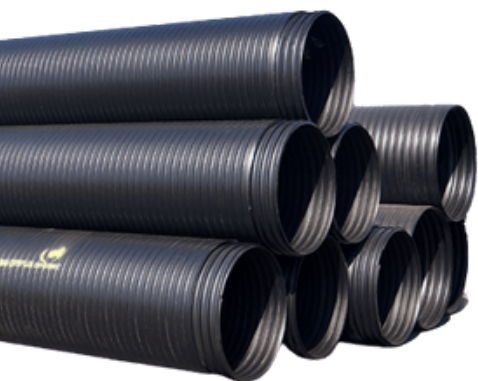


HDPE PIPING

WE ARE SUPPLIERS OF HIGH-DENSITY POLYETHYLENE (HDPE) PIPES.

SMOOTH-WALL PIPES

Designed to withstand high pressure levels and offer excellent abrasion resistance. Suitable for use in slurry, tailings, and heap leaching applications. These pipes are resistant to corrosion and to most chemicals used in mining operations. Their flexibility allows adaptation to a wide range of terrains. Available in nominal diameters from 25 mm to 1,200 mm, with maximum lengths of up to 24 m.



CORRUGATED PIPES

Available with single-wall or double-wall configurations. Their primary use is for gravity flow and underground liquid conveyance. They are resistant to static and dynamic loads, lightweight, and easy to handle and install. They offer high ring stiffness, excellent hydraulic capacity, and resistance to chemical agents.

Typical applications include: Stormwater drainage - Sewer systems
Available in diameters ranging from 63 mm to 1,000 mm.



GROOVED PIPING SYSTEM



Couplings, fittings, mechanical accessories, and valves for metal and plastic piping systems, featuring grooved connection technology. These grooved components are compatible with a wide range of piping materials and service applications, including water, fire protection systems, slurries, tailings, process piping, chemicals, and fuels, among others.

- Fast and easy installation.
- Versatility and reliability.
- Enhanced safety (no hot work required).



LITHIUM INDUSTRY-SPECIFIC DEVICES (DBS)®

Developed through our in-house R&D team, this device can be adapted to different types of pumps, transforming them into an optimal solution for the lithium industry. These systems have been successfully deployed in lithium operations across Argentina.

Key advantages include:

- Pumping of liquids at depths as shallow as 15 cm.
- Improved hydraulic conditions, reducing crystallization.
- Integrated self-cleaning system. No priming required.
- Flexible positioning in multiple locations.



CONTACT US

✉ consultas@argenteomining.com

HEAD OFFICE & MAIN PLANT

- 📍 Public Road No. 12 S/N RC 3, Industrial Park, Las Heras, Mendoza.
- 📍 3rd Floor, Office 5 – Palmares Valley Office Building, Godoy Cruz, Mendoza.



SCAN THE CODE
AND ACCESS OUR WEBSITE
AND CONTACT INFORMATION.

ARG | m

ARGENTEO MINING S.A.

